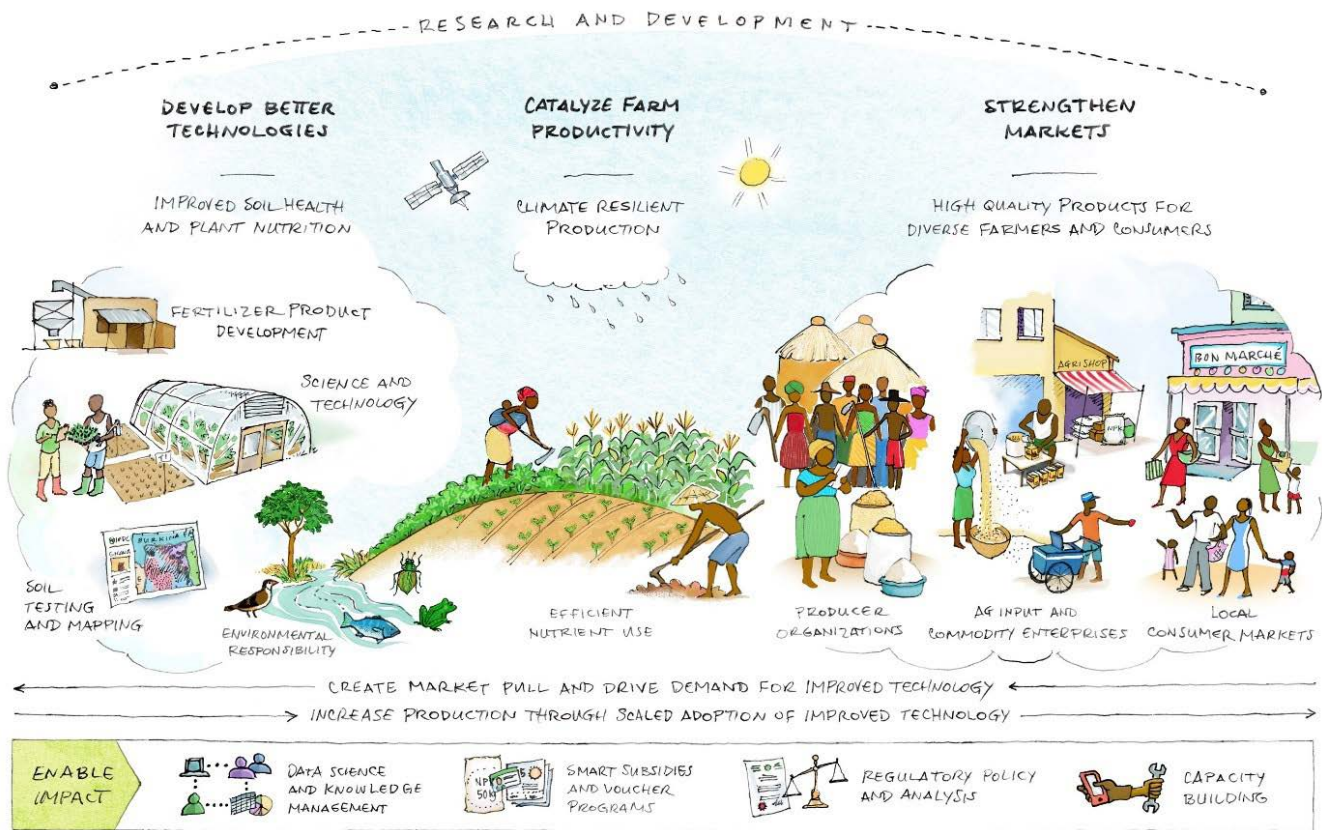


## NL-FOOD SECURITY ALLIANCE



IFDC IS AN INTERNATIONAL CENTER FOR SOIL FERTILITY AND AGRICULTURAL DEVELOPMENT WITH LONGSTANDING EXPERTISE IN DEVELOPING AGRICULTURE FROM THE GROUND UP IN MORE THAN 100 NATIONS.

### WE PUT OUR MISSION INTO ACTION BY:

- Developing, identifying and testing technologies and innovations to improve soil health and plant nutrition.
- Increasing farm productivity, profitability and sustainability of smallholder agricultural systems.
- Strengthening market systems to improve livelihoods, environmental outcomes and climate resilience.
- Enabling impact at scale by improving policies and strengthening capacities.

### IFDC'S MISSION

IFDC mission is to bring together innovative research, market expertise, and strategic public and private sector partners to identify and scale sustainable solutions for soil and plant nutrition that benefit farmers, entrepreneurs, and the environment.

# HEALTHY SOILS CHANGE LIVES

## Boosting soil health

IFDC's proven experience in Integrated Soil Fertility Management (ISFM) is the solid foundation for sustainable intensification. ISFM maximizes the efficiency of land, water and nutrients and improves crop yield with modest use of mineral fertilizer, soil amendments and organic inputs, as well as water harvesting, improved germplasm, agro-forestry, and crop rotation or intercropping with legumes.

## Driving change

Soil health is key to sustainable food and nutrition security but continues to deteriorate, especially among the world's poorest farm households. This situation will be exacerbated by climate change, population growth, changing diets, and urbanization.



For farmers to be able to apply ISFM, policymakers and business actors in food chains need to invest in soil health to close:

- Spatial gaps: farm produce is required far from the fields.
- Temporal gaps: short-term economic gains prevent long-term investment in soil health.
- Stakeholder gaps: consumers and stakeholders in the food chain lack awareness about soil health.

And create the right valuation of soils through:

- Market linkages for financial flow in the value chain from consumers back to farmers.

- Policies that stimulate adoption of ISFM.
- Public awareness raising of mutual interdependencies for food security

## Collaborative action

The Netherlands has outstanding experience and expertise in soil management and related areas to boost sustainable agriculture in and outside the Netherlands.

IFDC, 2SCALE program (Toward Sustainable Clusters in Agribusiness through Learning in Entrepreneurship) and NL-FSA, in collaboration with the Netherlands Food Partnership, are exploring opportunities for joining forces in a coalition with Dutch companies and organizations to address soil challenges in Low and Middle Income Countries.

The intention is to develop actions that promote inclusive value chain development as the locomotive to drive ISFM within a broader food systems perspective.

These collaborative actions will catalyze transformation in agriculture and food systems to counter soil threats and contribute to attaining the United Nations Sustainable Development Goals 1 and 2 and associated SDGs.



# NL-FSA

The NL-Food Security Alliance (NL-FSA) is a network of mainly Dutch companies and institutions developing exclusive and sustainable solutions in the agri-water-food-business.

NL-FSA is a Royal Eijkelpark initiative

 **Eijkelpark**  
Meet the difference

Contact: [NL-FSA@eijkelpark.com](mailto:NL-FSA@eijkelpark.com)

 **IFDC**  
Developing Agriculture from the Ground Up

## CONTACT:

P.O. Box 2040

Muscle Shoals

Alabama 35662 U.S.A.

T +1 256 381 6600

E <https://ifdc.org/contact-us/>

I [www.ifdc.org](http://www.ifdc.org)